

## For Residential and Commercial Applications

Job Name \_\_\_\_\_  
 Job Location \_\_\_\_\_  
 Engineer \_\_\_\_\_  
 Approval \_\_\_\_\_

Contractor \_\_\_\_\_  
 Approval \_\_\_\_\_  
 Contractor's P.O. No. \_\_\_\_\_  
 Representative \_\_\_\_\_  
 SKU \_\_\_\_\_

# SmartSense™ Excess Flow & Thermal Shutoff Valve

The Dormont SmartSense™ helps safeguard you and your home with its innovative, dual-sensing capabilities.

**In the event of a gas line rupture, disconnection, or even a fire, SmartSense detects the potential threat and automatically activates itself.** This device includes two primary components:

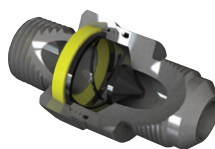
- **Excess Flow Limiting:** The plunger limits gas flow in the event of a gas appliance connector rupture or disconnect, helping to protect against a harmful build-up of gas within the home.
- **Fire Safe Shutoff:** The thermal ring expands to stop the flow of gas when exposed to extremely high temperatures and the valve reaches 350 to 425 F.

### Benefits

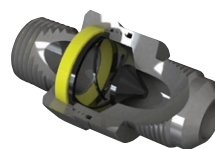
- Thermal Sensing Shutoff
- Protection against excessive gas leaks
- Automatic reset (non-thermal activation)
- Easy to install
- Compatible with most residential gas appliances
- Made in the USA

### Features

- High temperature thermal reaction ring
- High temperature, gas compatible, flow-limiting plunger
- Corrosion-resistant steel construction
- CSA Certified to ANSI Z21.93/CSA 6.30
- California DSA Certified (CA-DSA 16-F01)
- Commonwealth of Massachusetts Approved
- For use with Dormont Gas Appliance Connectors



Full flow during standard operation, providing the supply needs for the gas appliance



Gas flow is restricted by the plunger due to full line rupture or disconnect, providing protection against excessive gas leaks



The thermal ring expands to stop gas flow when exposed to extreme temperatures. (350°F to 425°F)

**Patent Pending**

### ⚠ WARNING

Installation and service **MUST** be performed by qualified installer. Installer must read and follow all Dormont safety, use, sizing, installation and care instructions and follow all building codes, construction standards, appliance manufacturer recommendations and instructions, and applicable ANSI standards

### NOTICE

The information contained herein is not intended to replace the full product installation and safety information available or the experience of a trained product installer. You are required to thoroughly read all installation instructions and product safety information before beginning the installation of this product.

Dormont product specifications in U.S. customary units and metric are approximate and are provided for reference only. For precise measurements, please contact Dormont Technical Service. Dormont reserves the right to change or modify product design, construction, specifications, or materials without prior notice and without incurring any obligation to make such changes and modifications on Dormont products previously or subsequently sold. Refer to the owner's manual for warranty information.

**Dormont**<sup>®</sup>  
 A WATTS Brand

EFV-TSO SIZING TABLE	MODEL 90-1031-V1-TS		MODEL 90-1031-V2-TS		MODEL 90-2031-V4-TS		MODEL 90-3041-V5-TS		MODEL 90-303M-V6-TS	
	Rated Trip	Max Capacity	Rated Trip	Max Capacity	Rated Trip	Max Capacity	Rated Trip	Max Capacity	Rated Trip	Max Capacity
Horizontal	68 @ 1.05	48 @ 0.30	95 @ 1.55	60 @ 0.40	115 @ 0.70	93 @ 0.35	160 @ 0.80	125 @ 0.25	160 @ 0.80	125 @ 0.25
Vertical Up	105 @ 1.95	65 @ 0.50	115 @ 2.25	80 @ 0.60	145 @ 1.05	118 @ 0.45	185 @ 1.00	150 @ 0.40	185 @ 1.00	150 @ 0.40
Vertical Down	36 @ 0.40	30 @ 0.15	60 @ 0.70	45 @ 0.25	85 @ 0.45	60 @ 0.15	135 @ 0.60	105 @ 0.20	135 @ 0.60	105 @ 0.20
Inlet	½" MNPT x ¾" FNPT		½" MNPT x ¾" FNPT		½" MNPT		¾" MNPT x 1/2" FNPT		½" MNPT	
Outlet	¾" OD Flare		¾" OD Flare		½" OD Flare		¾" OD Flare (1 <sup>5</sup> / <sub>16</sub> "-16 Threads)		¾" OD Flare (1 <sup>5</sup> / <sub>16</sub> "-16 Threads)	

### NOTICE

- 1) Rated Trip Flow and Max Flow Capacity values are kBTU/hr @ max. "w.c. PD (natural gas, 0.64 s.g., 1000 BTU/cu.ft.).
- 2) A minimum of 5" w.c. inlet pressure is required with a maximum inlet pressure of 14" w.c. (1/2 psig).
- 3) For more information on flow rates with a specific Dormont gas connector, contact 1-800-DORMONT.
- 4) Operating temperature: -20°F to 150°F (-29°C to 66°C).
- 5) Bypass rate: MAX 2.5 SCFH at 0.5 psi.
- 6) Installation orientation: Multi-poise (horizontal, vertical up, vertical down).
- 7) EFV Type: EFVB (Bypass with automatic reset).
- 8) Maximum trip flow is 1.4 times the rated trip flow.
- 9) Model -TS (Thermal Shutoff) Reaction Temperature Range: 350°F to 425°F (176.7°C to 218.3°C).



USA: T: (800) 367-6668 • F: (724) 733-4808 • Dormont.com  
 Canada: T: (905) 332-4090 • F: (905) 332-7068 • Dormont.ca  
 Latin America: T: (52) 81-1001-8600 • Dormont.com